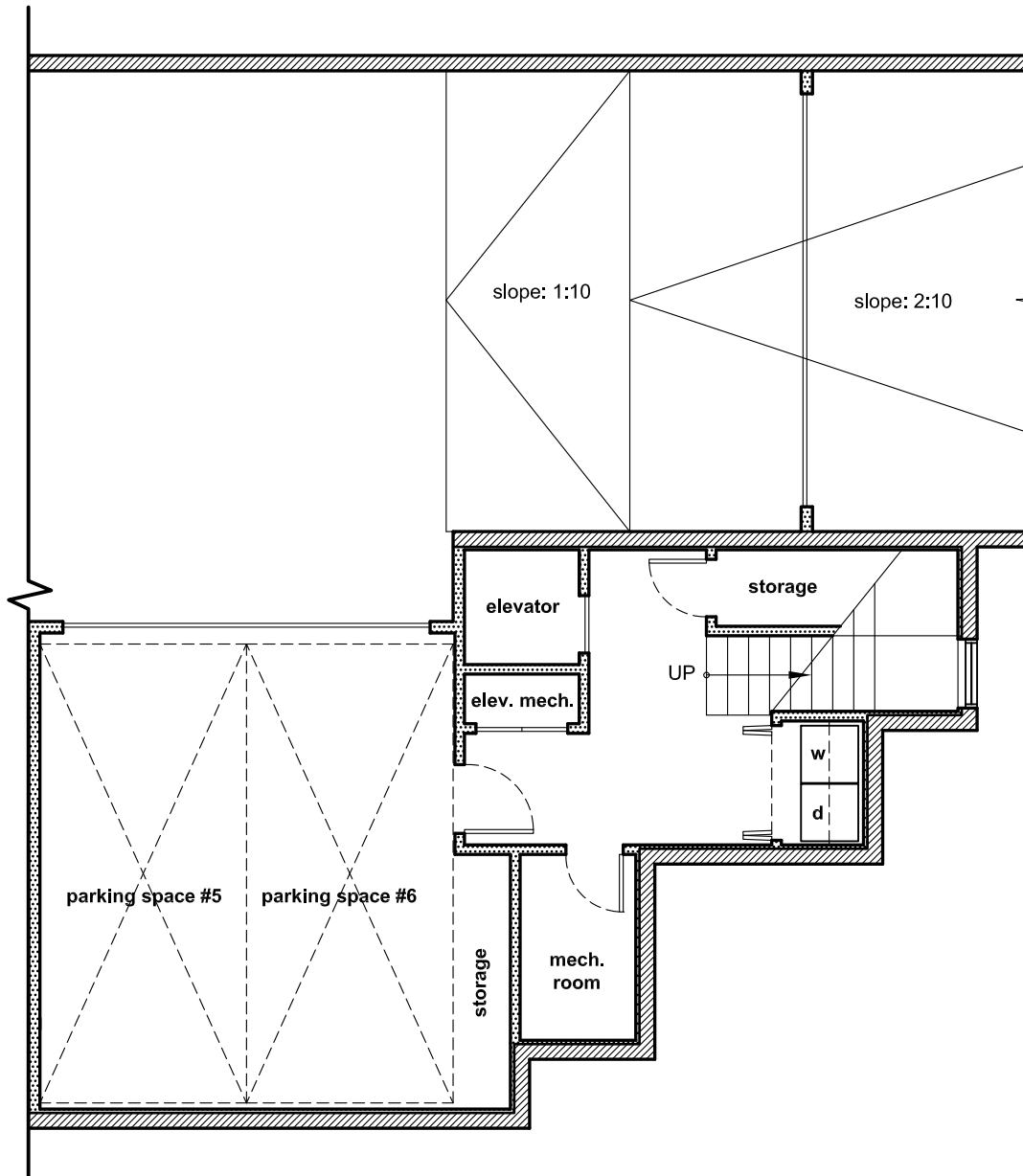


818 Olive Avenue Area Calculations:

Basement: 399 (does not include parking garage)
First: 1,165
Second: 1,145
TOTAL: 2,709 sq.ft. (does not include 400 sq.ft. roof deck)

818 olive avenue
coronado, ca 92118

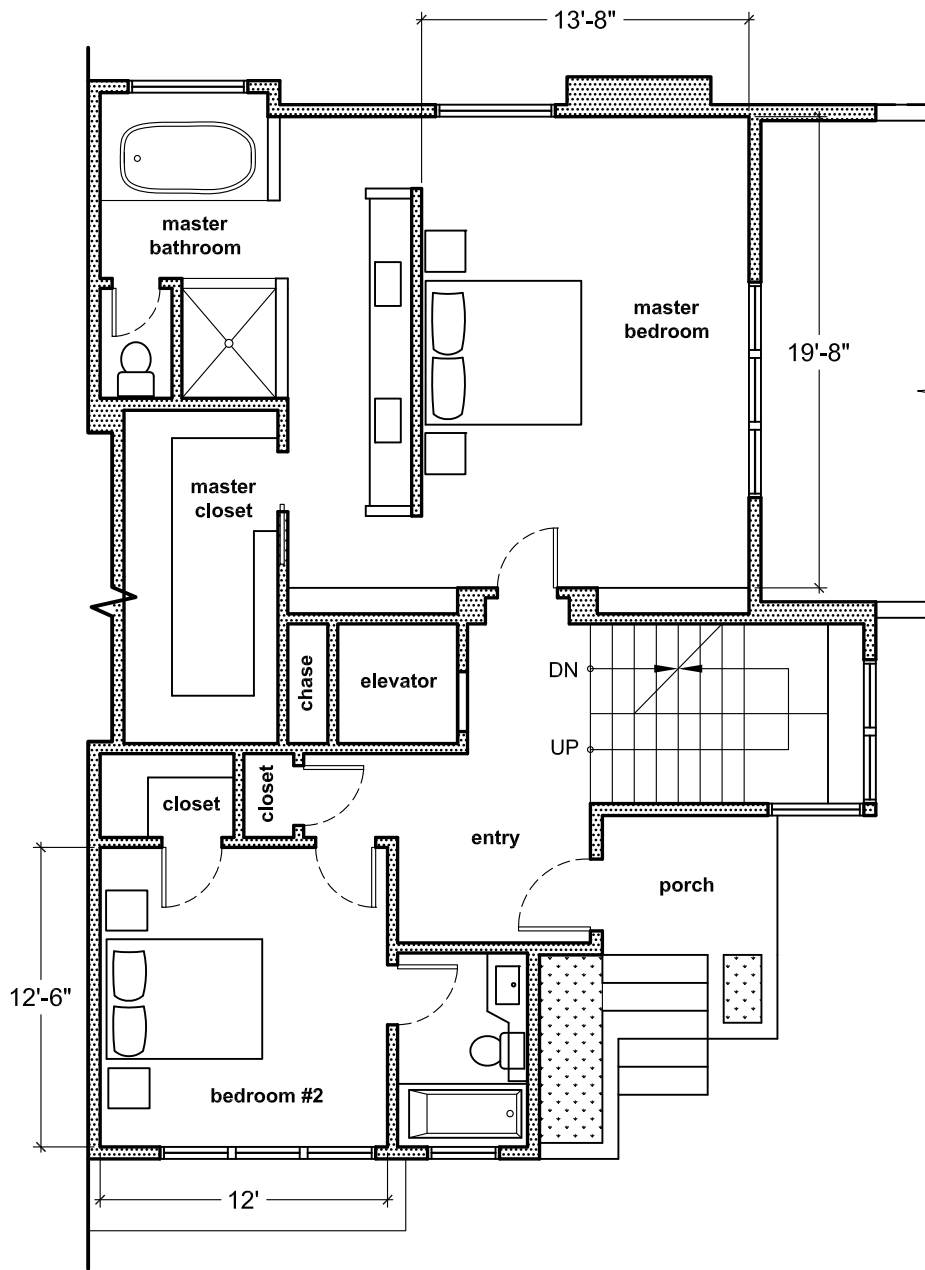
project architect:
christian rice architects, inc.



basement level floor plan

818 olive avenue
coronado, ca 92118

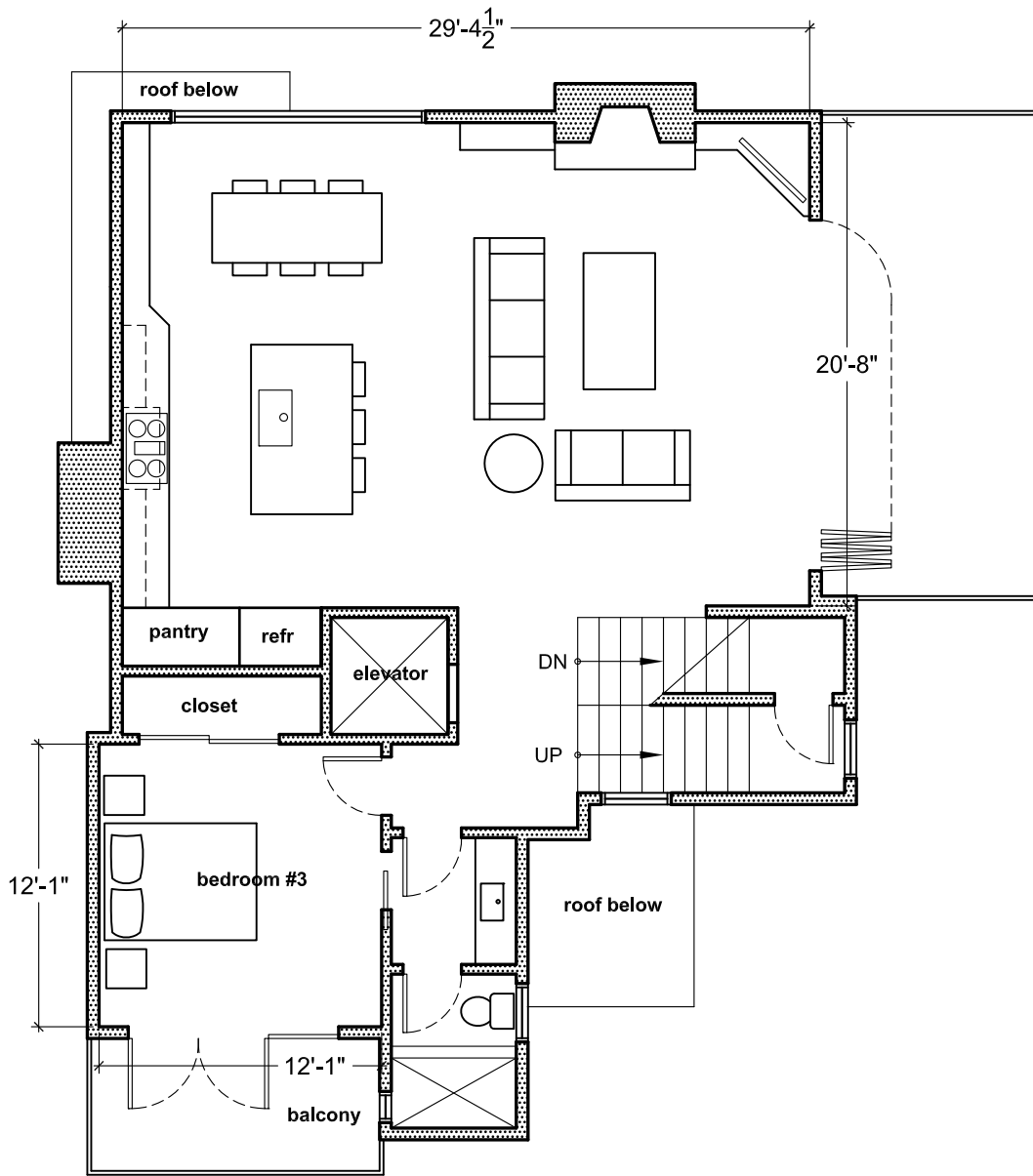
project architect:
christian rice architects, inc.



first level floor plan

818 olive avenue
 coronado, ca 92118

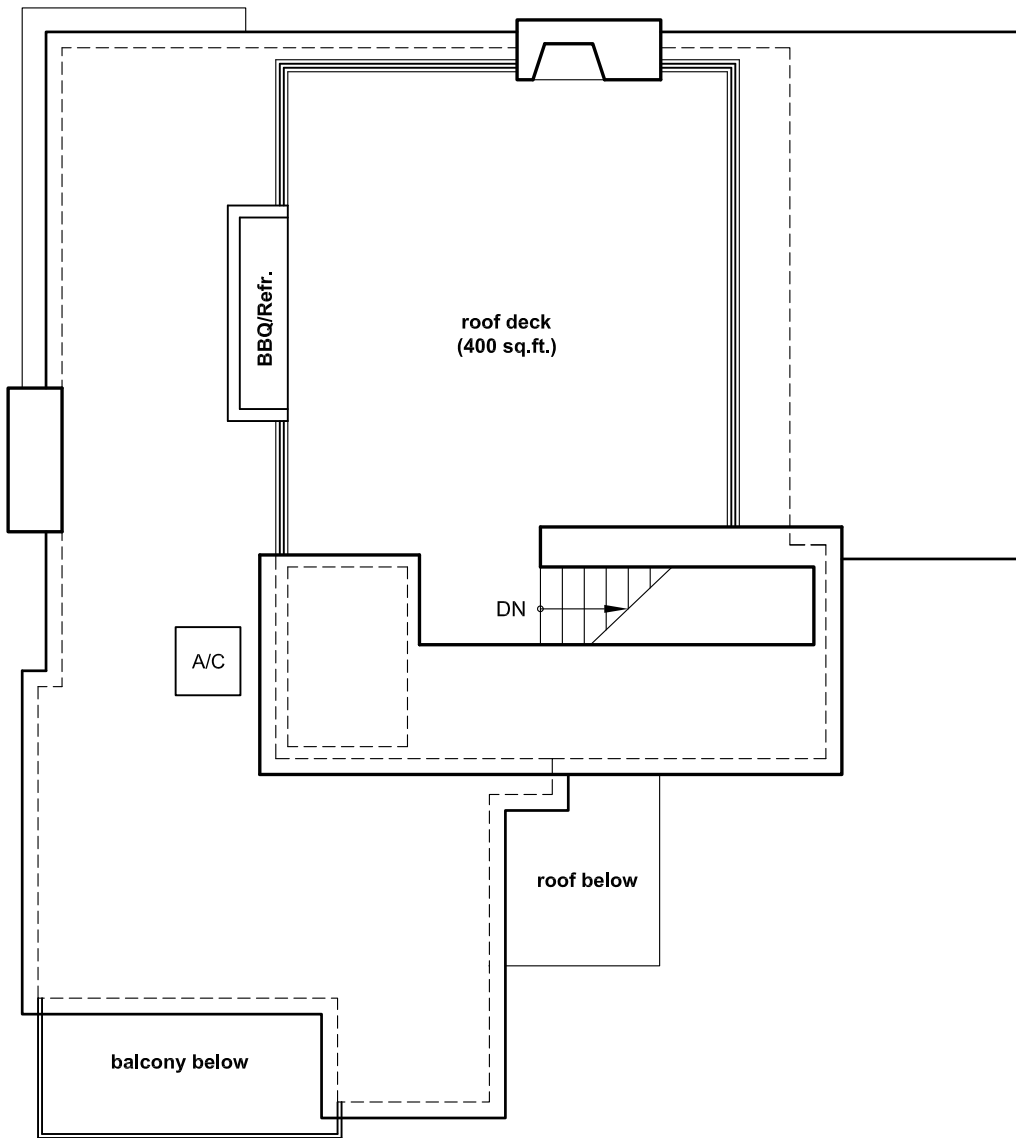
project architect:
 christian rice architects, inc.



second level floor plan

818 olive avenue
 coronado, ca 92118

project architect:
 christian rice architects, inc.



roof plan

818 olive avenue
coronado, ca 92118

project architect:
christian rice architects, inc.